



Cost Effective Digital Retrofit Kit

Mastering your DR budget

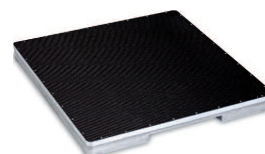


- 2 kinds of detectors
- Maximum flexibility



Pixium 3543 EZ

- Cassette size
- Ultra-light
- Mobile - Wifi



Pixium RAD

New large format digital x-ray detector

Upgrade any chest and bone system to DR

Why go digital ?

- Gain time : faster exams, no more handling
- Save money : no more consumable, higher patient workflow
- Enhance image quality
- Reduce dose

Da-Vinci View Workstation

Your intuitive and high patient workflow DR system, powered by Alliance software.

- Optimized dose reduction
- Full DICOM 3 capability / RIS
- GOP™ Enhancement Image Software
- DAP (Dose Area Product Meter) interfaced to patient database*
- User profile with personalized settings for all parameters*
- Special software for workflow management



*depending on generator

Adapts to all DR needs and budgets

▪ Pixium 3543 EZ: Portable 35x43 cm (14"x17") detector

New generation cassette size **WiFi flat panel detector**.

While providing outstanding image and diagnostic quality, the new Pixium EZ is designed to simplify examination conditions.

The versatility and autonomy of this portable, ultra-light and robust detector optimises patient workflow.

- Superior image quality/low dose
- 148 µm pixel size: ideal for radiography
- Preview in 3 seconds
- Only 2.8 kg, the lightest FPD available

▪ Pixium RAD, Flat panel detectors :

→ 41x43 cm (16"x 17")

→ 43x43 cm (17"x 17")

The 2 Pixium RAD detectors are available in two technologies, Csl - for optimal dose - and Gadox.

These 4 setups provide the **best configuration for every budget.**



The perfect configuration

Find the perfect configuration among fixed and digital detectors to transform your conventional chest and bone room into a cost-effective, high performance DR system.

Pixium EZ



Table, VBS or freestanding

Pixium EZ + Pixium RAD



Table or freestanding

VBS

2 Pixium RAD



Table

VBS

Scope of delivery of the digital retrofit kit

